

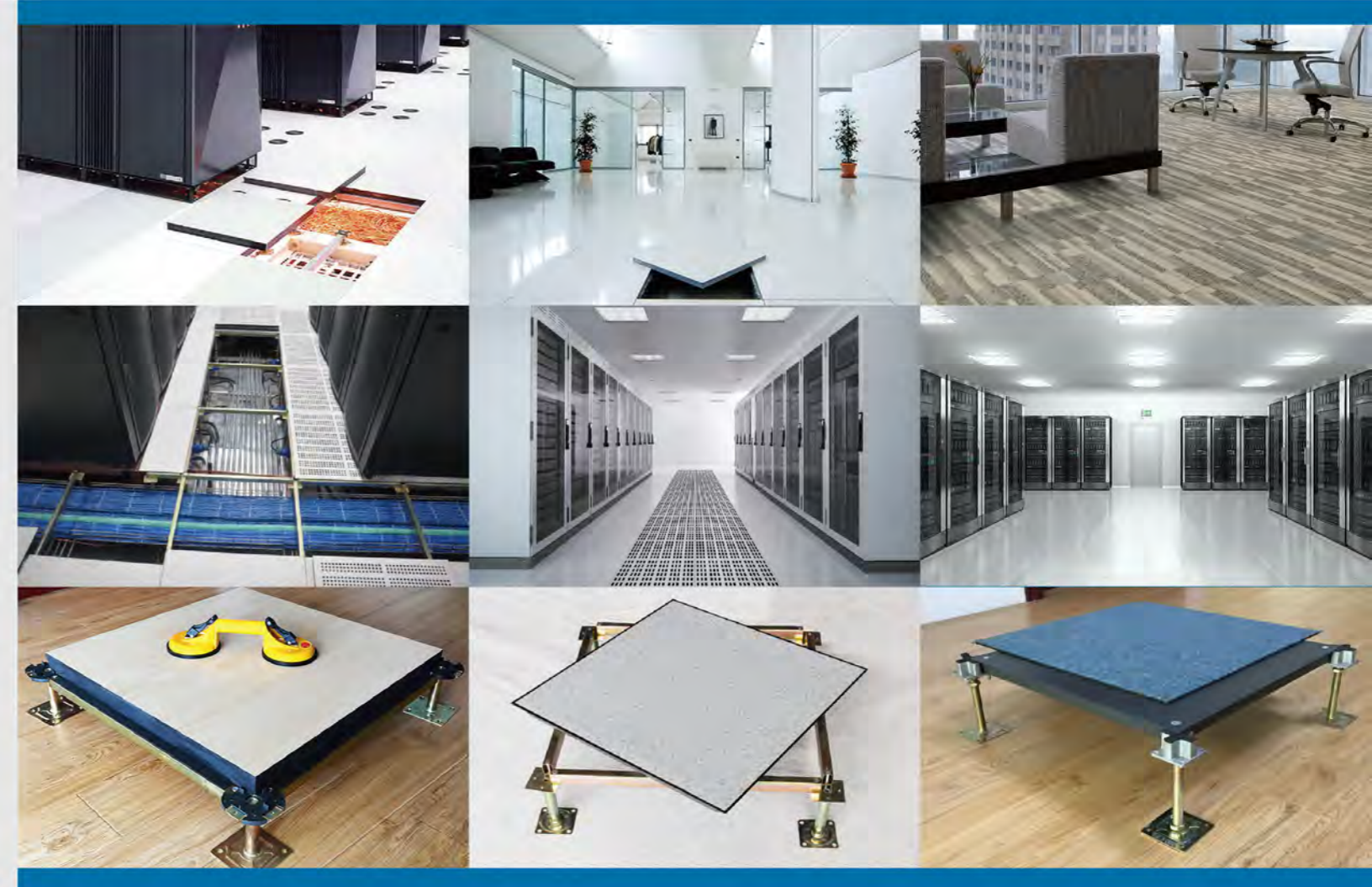
Raised Floor System

Comparison of Different Panel
各型地板材料性能比较表

Performance性能	钢质水泥基地板 Steel cement panel	钢质空心地板 Steel hollow panel	木质地板 Woodcore panel	硫酸钙地板 Calcium Sulphate panel	压铸铝地板 Die-casting aluminum panel	
Ultimate load极限载荷	A	B	C	D	E	
Safety factor安全系数	A	B	C	D	E	
Overload protection超载荷保护	A	B	C	D	E	
Fire rating防火性能	A	B	E	A	E	
Panel size地板尺寸精确度	B	B	B	B	A	
Panel weight(bare fish)裸板重量	C	A	A	E	A	
Bare panel sound insulation裸板隔音性能	C	C	B	A	E	
Walking feeling步行感	A	B	A	A	B	
Recycled content回收性原材料比例	B	B	D	A	E	
"Support for Green building certificate 绿色建筑申请支持"	B	B	D	A	E	
Cost efficiency估计单位成本	A	D	D	B	E	
Cutting ease and cost切割难度和切割成本	B	A	A	E	C	
Application 用途	Office办公区	A	B	A	A	E
	Data center数据中心	A	B	D	B	B
	Education教育区	A	D	A	B	E
	Casino赌场	A	E	D	A	B
	Industrial cleanroom洁净厂房	B	E	E	E	A
	Library图书馆	A	C	B	A	E

Note备注:

- (1) MAJET has continuous product and product data improvement. It reserves the right to change type design and specifications without notice.
美杰特致力于产品和技术的不断更新. 我们保留对产品品种设计和性能的修改且恕不另行通知的权利.
- (2) 'A' ---Most advantage最优, 'E' ---Least advantage最差.
- (3) The comparison is based on the panels of the same concentrated loading grade. 此对照表基于各品种同等集中载荷的地板.



公司简介

COMPANY PROFILE

MAJET is a manufacturer and exporter in China, supplying access floor system, data center products, underfloor air conditioning and underfloor wiring. We have over 55,000 square meters plant and 150 workers and around 30 years experience in industry. Standard: Through the involvement of all MAJET employees, we always strive for quality in everything we do. We are committed to provide services and products that exceed expectations of our customers.

Quality: we, employees of MAJET, are dedicated to the idea that quality is what we provide for TOTAL CUSTOMER SATISFACTION.

People: We strongly believe that our working team is our strength, it consists of people with good work ethic and positive attitude.

Resources: We have management and sales team that represents our vision, our determination, passion and desire to make our business grow and help our customers succeed in industry.

Customer Service: It's our company's highest priority because our business concentrates not only on manufacturing, but also on providing outstanding service.

Relationships: We believe that successful business results from strong relationships between our customers and working team.

The Environment: MAJET is and always will be an environmentally conscious company.

认证证书

CERTIFICATES



MOB Report



CISCA Report



VOC Report



QAS Report



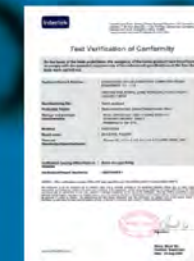
STATIC Report



ISO14001 Report



KS Report



CE Report



ISO9001 Report



质量控制

QUALITY CONTROL



Impact Load Test
冲击测试



Rolling Load Test
滚动载荷测试



Hardness Test
硬度测试



Coating Thickness Test
喷粉厚度测试



Concentrated Load Test
集中载荷测试



Salt-spray Test
盐雾测试



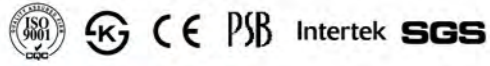
Flatness Test
平整度测试



Design Load Test
设计压力载荷测试

全钢高架活动地板

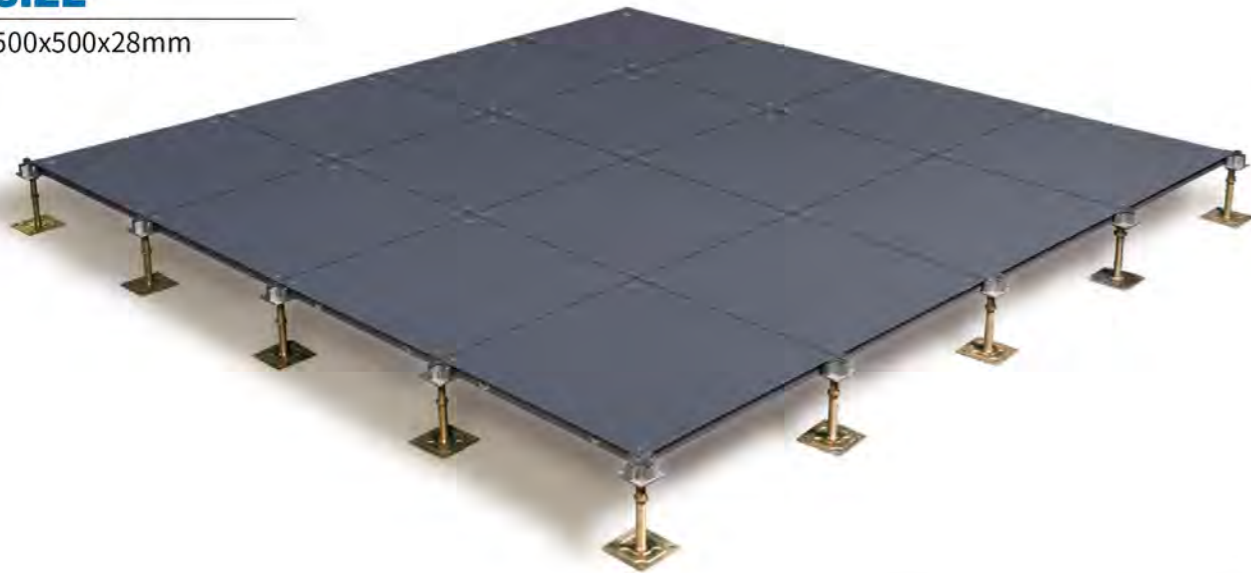
STEEL CEMENTITIOUS PANEL



OA50 PANEL
OA50 地板

SIZE

500x500x28mm



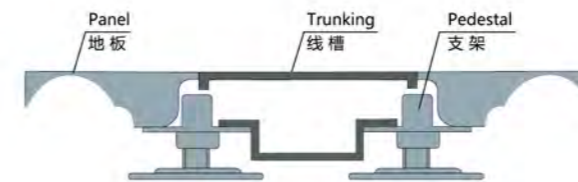
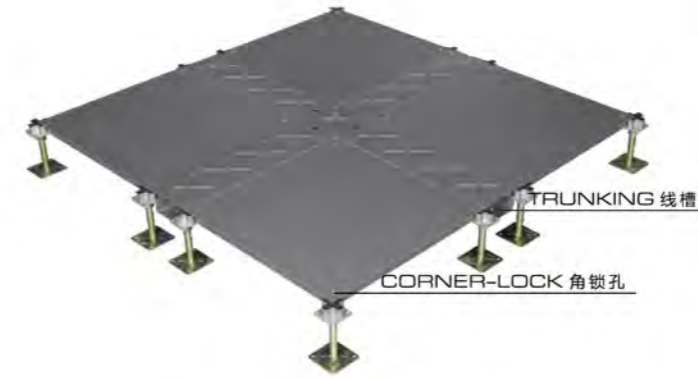
结构/Structure

OA50地板采用SPCC硬质冷轧板，底部采用ST14拉伸板，经拉伸、点焊、磷化、喷塑后，内腔填充轻质发泡水泥而成，四角带有角锁孔。

OA50 panel is made of steel plate, top to be SPCC material, bottom to be ST14 material, after pan formed and joined together by resistance welding, the panel is coated with epoxy paint, then infilled with light cement.

特征/Feature

- 全钢结构，地板承重能力好
- 良好的防火性能
- 地板尺寸精度高，互换性好，易安装，维修方便
- All-steel structure, nice loading capacity
- Excellent fire resistance ability
- Good dimension accuracy, panel can be interchangeable



线槽地板安装示意图

OA50-A-C5 PANEL

线槽系统/Wire Trunking System

线槽地板可根据使用要求任意添加线槽，布线更具灵活性，可以将强弱电分开隔离。便于检修、节约大楼空间，突出智能化，电板的功能性。

A workstation can be easily and quickly relocated with cable management without disruption. Convenient for connecting wire at any point without cutting floor. Suitable for all kinds of plug socket terminals. Adjustable wire-connected location.



MT50E



MT50反



MT50-C2E



MT50-C2反

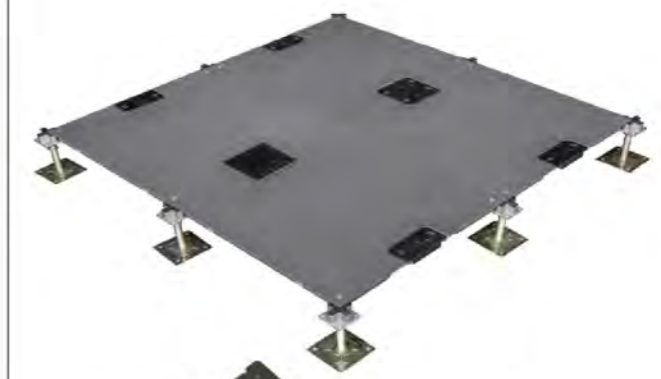
Type	Size	Concentrated	Impact Load	Ultimate Load	Uniform Load	Rolling Load	Remarks
型号	尺寸	集中载荷	冲击载荷	极限载荷	均布载荷	滚动载荷N	备注
International	mm	N	N	N	N/M ²	10次 10000次	
OA668	HDG500 28QG	500×500×28	≥2990	670	≥8890	≥12500	OA 智能化楼宇架空标准活动地板 (CISCA)
OA800	HDG500 28QG	500×500×28	≥3596	670	≥10799	≥19796	
OA1000	HDG500 28BG	500×500×28	≥4498	670	≥13494	≥23294	

OA50-C2 PANEL

特征/Feature

OA地板系统能有效的节能，提高室内空气质量，创造绿色办公环境。

OA access floor system effectively reduces energy cost and improves inside air quality, makes it to be green office environment.



STEEL CAP 钢盖板



PLASTIC CAP 塑料盖板

全钢高架活动地板

STEEL CEMENTITIOUS PANEL



OA60 PANEL
OA60 地板

SIZE

600×600×33mm

结构/Structure

OA60地板由冷轧钢板和拉伸钢板构成，板内填充轻质发泡纯水泥。用宝钢钢板经拉伸、点焊、磷化、喷塑做成，内腔填充发泡水泥，带有角锁孔。

OA60 panel is made of steel plate, top to be SPCC material, bottom to be ST14 material, after pan formed and joined together by resistance welding, the panel is coated with epoxy paint, then infilled with light cement.



特征/Feature

凸点设计，增强集中载荷

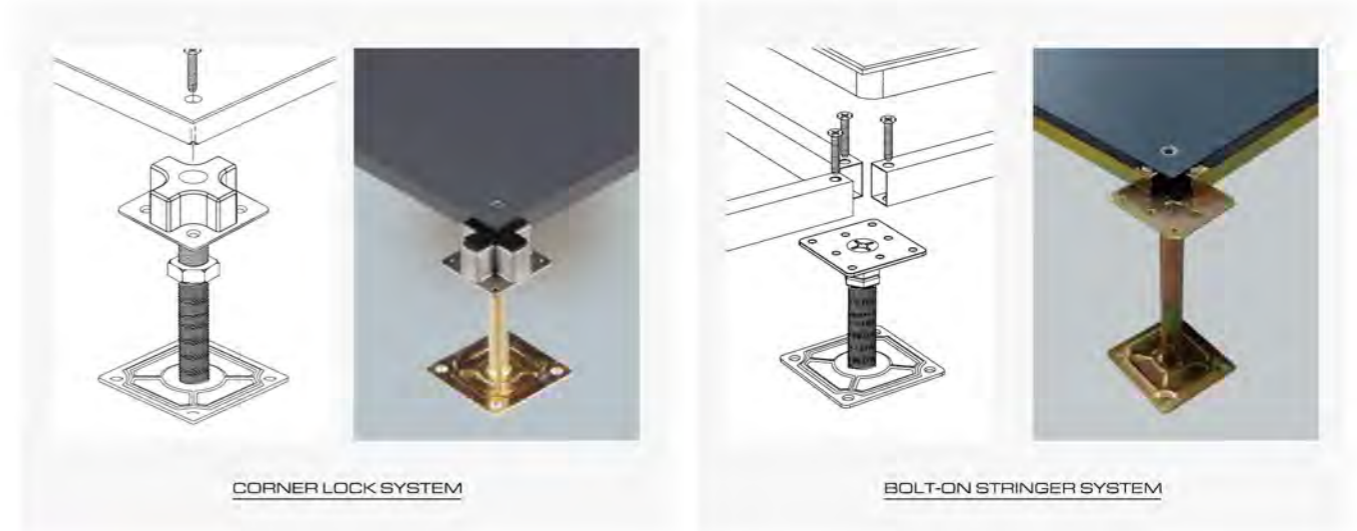
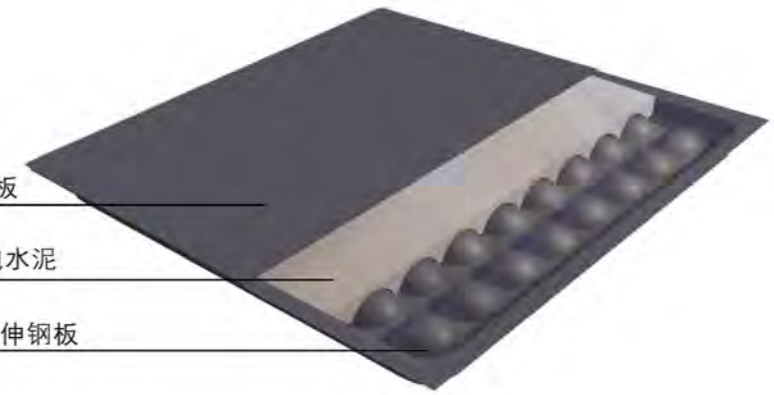
Embossment structural. Enhance the concentrated load capability.



SPCC steel 冷轧硬板

Light cement 发泡水泥

ST14 steel ST14拉伸钢板



结构/Structure

- 角锁孔连接使地板安装更稳固，更好地支撑地板系统。
- 地板承载力通过角铝支架均匀分散。
- 有不同种类支架系统可供选择安装OA地板。

- Screw down design supports the system effectively and makes the installation easily and stable.
- The load is transferred directly onto the center of pedestal column.
- Different types of understructures are available for install OA panel system.

Type	Size	Concentrated	Impact Load	Ultimate Load	Uniform Load	Rolling Load	Remarks
型号	尺寸	集中载荷	冲击载荷	极限载荷	均布载荷	滚动载荷N	备注
International	mm	N	N	N	N/M ²	10次 10000次	
SC668	HDG600 35QG 600×600×33	≥2990	670	≥8890	≥12500	2215 1548	OA 智能化 楼宇架空标 准活动地板 (CISCA)
SC800	HDG600 35QG 600×600×33	≥3596	670	≥10799	≥19796	2959 2215	
	HDG610 35BG 610×610×33						
SC1000	HDG600 35ZG 600×600×33	≥4498	670	≥13494	≥23294	3596 2959	
	HDG610 35ZG 610×610×33						
SC1250	HDG600 35ZG 600×600×33	≥5595	670	≥16797	≥33084	4498 3596	
	HDG610 35ZG 610×610×33						
SC1500	HDG600 35ZG 600×600×33	≥6693	670	≥20090	≥42581	5595 4498	
	HDG610 35ZG 610×610×33						
SC2000	HDG600 35ZG 600×600×33	≥8898	670	≥26685	≥49784	6693 5595	
	HDG610 35ZG 610×610×33						
SC2500	HDG600 35ZG 600×600×33	≥11093	670	≥33290	≥58280	8898 6693	
	HDG610 35ZG 610×610×33						

全钢高架活动地板

STEEL CEMENTITIOUS PANEL



LAMINATE PANEL 贴面地板

SIZE

600×600×35mm



特征/Feature

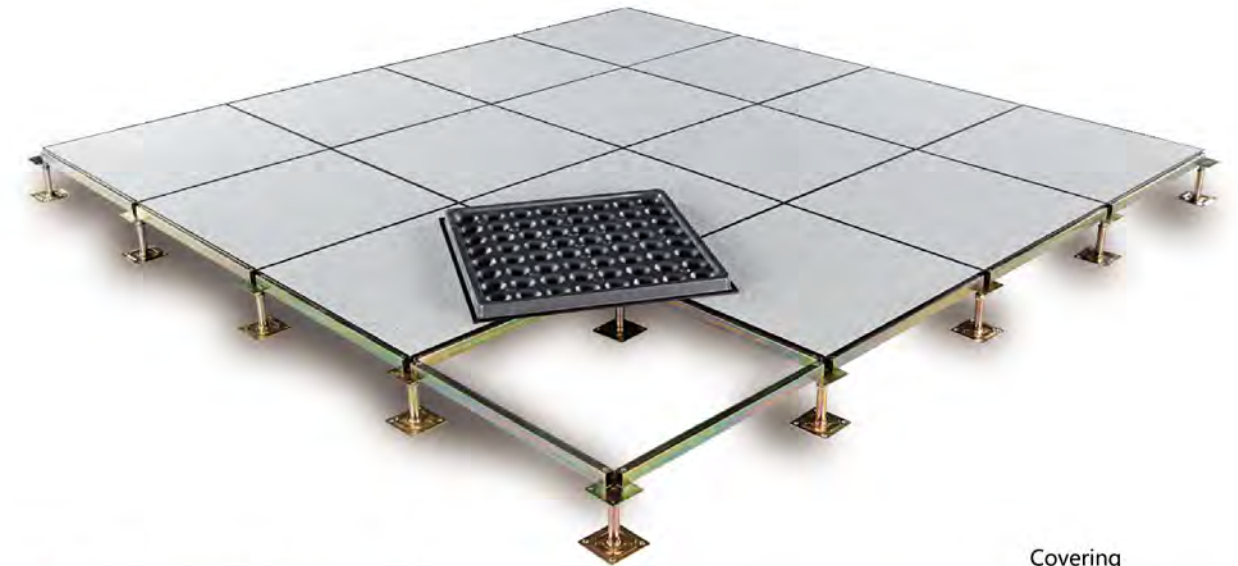
- 适用于计算机房、数据中心、通讯中心
- 滚动载荷与极限载荷强
- 轻质水泥填充
- 黑灰色喷塑美观且使用寿命长
- 防火级
- 便于安装、布线，维护机房整体性

- Used for computer room, data center and communication center
- Excellent rolling load & ultimate load performance
- Light weight cement makes panels solid and quiet
- Black/grey epoxy paint finish for long time protection
- Class A flame spread and smoke development rating
- Convenient installation supplies an excellent solution for office integrity, wiring and data cable service



Wide range finishes available 贴面材料

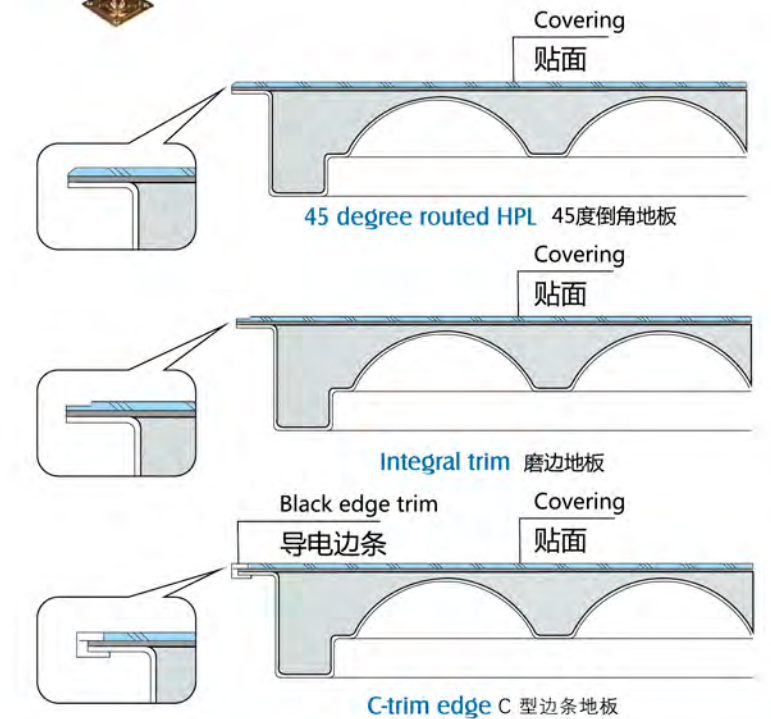
- 防火板
- 导电PVC
- 瓷砖
- 地毯
- 亚麻地材
- 花岗岩/大理石
- High Pressure Laminate
- Conductive vinyl tile
- Ceramic
- Carpet tile
- Linoleum
- Granite/Marble



Control center 控制中心



Communication center 通讯中心



Type	Size	Concentrated	Impact Load	Ultimate Load	Uniform Load	Rolling Load	Remarks
型号	尺寸	集中载荷	冲击载荷	极限载荷	均布载荷	滚动载荷N	备注
International	国内型号	N	N	N	N/M ²	10次 10000次	
SC668	HDG600 35QG 600×600×35	≥2990	670	≥8890	≥12500	2215 1548	Floor system resistance 1×10 ⁵ -1×10 ⁶ Ω (系统电阻) 可提供进口或国产的多种色彩与花纹的防静电面材安装板高度≥60mm
SC800	HDG600 35QG 600×600×35	≥3596	670	≥10799	≥19796	2959 2215	
	HDG610 35BG 610×610×35						
SC1000	HDG600 35ZG 600×600×35	≥4498	670	≥13494	≥23294	3596 2959	
	HDG610 35ZG 610×610×35						
SC1250	HDG600 35ZG 600×600×35	≥5595	670	≥16797	≥33084	4498 3596	
	HDG610 35ZG 610×610×35						
SC1500	HDG600 35ZG 600×600×35	≥6693	670	≥20090	≥42581	5595 4498	
	HDG610 35ZG 610×610×35						
SC2000	HDG600 35ZG 600×600×35	≥8898	670	≥26685	≥49784	6693 5595	
	HDG610 35ZG 610×610×35						
SC2500	HDG600 35ZG 600×600×35	≥11093	670	≥33290	≥58280	8898 6693	
	HDG610 35ZG 610×610×35						

木质高架活动地板

WOODCORE ACCESS FLOOR



PVC SEALED PANEL PVC封边

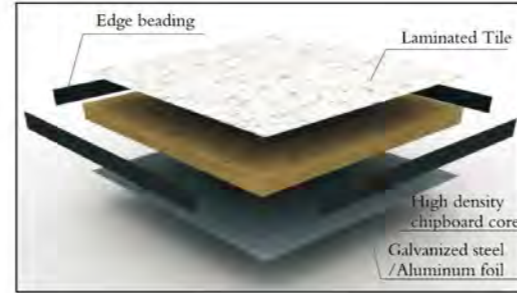
SIZE

600×600×40mm
600×600×30mm

结构/Structure

地板采用高密度阻燃刨花板(720Kg/m³)基材，表面可粘贴防静电HPL、导电PVC，底面采用优质镀锌板（或铝皮）封底，四周采用导电胶条封边。

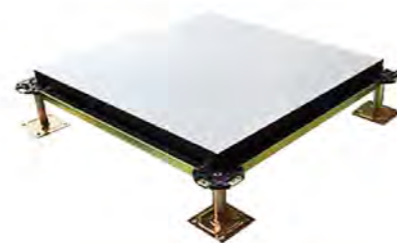
Woodcore access floor consists of high-density(720Kg/m³) chipboard. Galvanized steel sheet/aluminum foil is bonded to the bottom of the chipboard. HPL or PVC is stuck to the top of the chipboard, four edges are sealed with PVC edging strip.



特征/Feature

- 重量轻、噪音小；
- 外形尺寸精确度高，地板可任意互换；
- 承载能力好，防火性能达B2级，防静电性能优；
- 密封性好，防潮性能强；

- Light weight, small noise when working
- Dimension accuracy with nice interchangeability.
- Strong loading capacity, fire resistance B2 and excellent anti-static properties.
- Good sealing and water-proof.



Type	Size	Concentrated	Impact Load	Ultimate Load	Uniform Load	Rolling Load
型号	尺寸	集中载荷	冲击载荷	极限载荷	均布载荷	滚动载荷N
International	mm	N	N	N	N/M ²	10次 10000次
Light duty 轻型	600×600	≥2990	670	≥8890	≥12500	2215 1548
Medium duty 中型	600×600	≥3596	670	≥10799	≥19796	2959 2215
Heavy duty 重型	600×600	≥4498	670	≥13494	≥23294	3596 2959

木质高架活动地板

WOODCORE ACCESS FLOOR



ENCAPSULATED PANEL 多层包边木地板

SIZE

600×600×30mm
600×600×25mm

结构/Structure

其材用高密度刨花板，上、下采用优质镀锌钢板包边，地板四周镀锌钢板经冲压铆接而成。

Floor panel is encapsulated to provide full steel encasement, steel to be high quality galvanized steel sheet as top and bottom. High density chipboard as the core.



应用/Application

- 各种防静电要求、承载要求、铺装效果要求高档的场合，如银行、电信机房、智能化办公室、高档机房。
- 镀锌板包边木地板，尤其适用于较潮湿的机房环境。
- 外形尺寸精确度高，绿色环保。
- Woodcore panel is widely used in high-grade rooms, such as banks, telecommunication centers, smart offices and computer rooms.
- This panel is particularly suitable for areas of high humidity.
- High dimension accuracy and environmental proof.

Structure

结构示意图

Galvanized steel 镀锌板

Chipboard core 高密度刨花板

Galvanized steel 镀锌板



Type	Size	Concentrated	Impact Load	Ultimate Load	Uniform Load	Rolling Load
型号	尺寸	集中载荷	冲击载荷	极限载荷	均布载荷	滚动载荷N
International	mm	N	N	N	N/M ²	10次 10000次
Light duty 轻型	600×600	≥2990	670	≥8890	≥12500	2215 1548
Medium duty 中型	600×600	≥3596	670	≥10799	≥19796	2959 2215

硫酸钙高架地板

CALCIUM SULPHATE ACCESS FLOOR



ENCAPSULATED PANEL 全包硫酸钙地板

SIZE

600×600×30mm



硫酸钙地板生产线



结构/Structure

全包硫酸钙地板由上下镀锌钢板和高密度硫酸钙基材构成。

Encapsulated with high density fiber calcium sulphate core.



特征/Feature

- 全包封闭结构、密封性强；
- 承载力、抗冲击性能高；
- 表面平整度、外形尺寸精确度高，地板可任意互换；
- 阻燃、隔热、隔声、防腐等性能好；
- 外表整齐美观、装饰性强、行走脚感舒适。
- Constituted by all steel sheet, good loading capacity.
- High dimension accuracy and excellent interchangeability.
- Water-proof, fire-proof, antiseptis and sound insulation.
- Elaborated made and good decorative effect. Full steel encasement and good sealing.

Type	Size	Concentrated	Impact Load	Ultimate Load	Uniform Load	Rolling Load	
型号	尺寸	集中载荷	冲击载荷	极限载荷	均布载荷	滚动载荷N	
International	mm	N	N	N	N/M ²	10次	10000次
Heavy duty 重型	600×600	≥4498	670	≥13494	≥23294	3596	2959
Extra Heavy duty 加强型	600×600	≥5595	670	≥16797	≥33084	4498	3596

硫酸钙高架地板

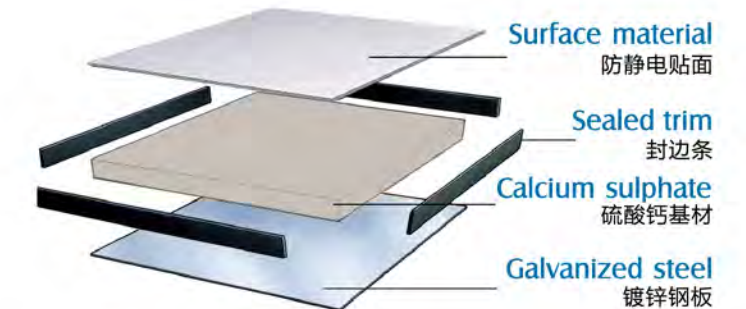
CALCIUM SULPHATE ACCESS FLOOR



PVC SEALED PANEL PVC封边

SIZE

600×600×40mm
600×600×30mm



结构/Structure

其材用高密度硫酸钙基材，表面采用HPL/PVC贴面，底面镀锌钢板，四周黑色PVC封边。

Floor panel is encapsulated to provide full steel encasement, steel to be high quality galvanized steel sheet as top and bottom. High density calcium sulphate as the core.

PVC panel

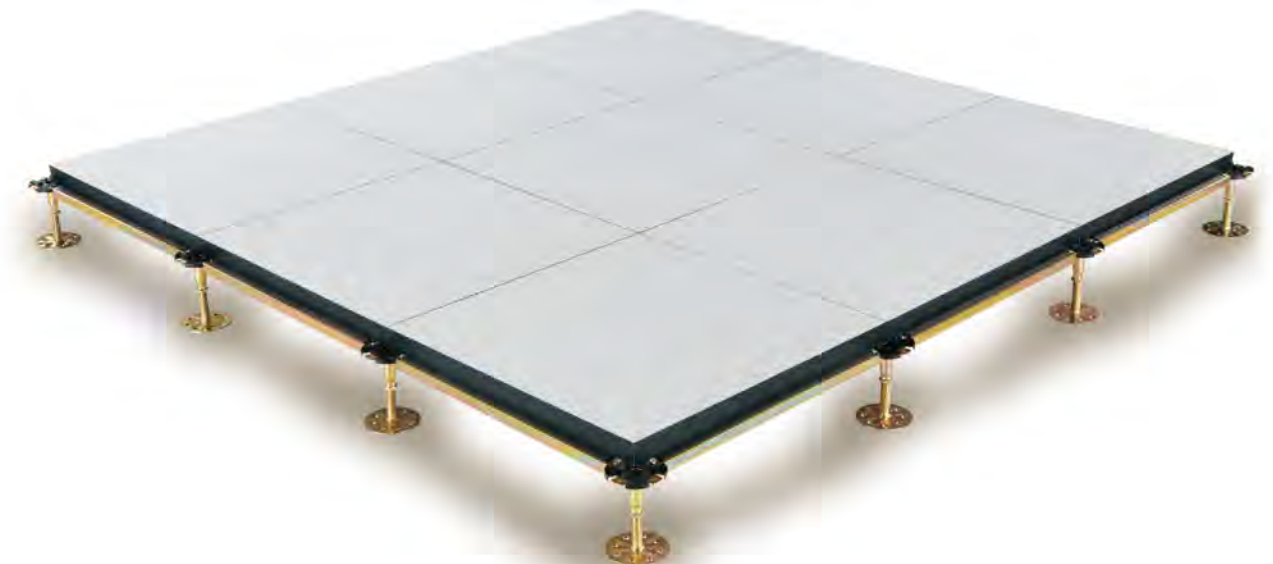
地板采用高密度硫酸钙板基材，表面可粘贴防静电HPL、导电PVC，底面采用优质镀锌板（或铝皮）封底，四周采用导电胶条封边。

Floor consists of calcium sulphate core. Galvanized steel sheet/aluminum foil is bonded to the bottom. HPL or PVC is stuck to the top, four edges sealed with PVC edging strip.

应用/Application

广泛应用于电信，电力电子，微电子，医学等行业的程控机房，计算机机房，电力调度室，洁净净化厂房等要求防静电场所。

Anti-static calcium sulphate raised floor is widely used in telecommunication room, power station, computer room, factory clean room and other anti-static requiring places.



无机质水泥地板

INORGANIC CEMENT FLOOR



SIZE

500mm×500mm

结构/Structure

无机质网络地板是由硅酸盐、无机纤维、矿物纤维、石英砂等材料经过高压一次成型的新一代绿色环保网络地板。该地板无任何挥发性有毒物质及辐射，可以完全被分解，使用年限与楼宇相同。每块地板自带穿线孔，地板四角镀锌底座支承，不带横梁系统。安装后平整度高，无发软的感觉，其表面铺设材料可用强化地板、PVC、方块地毯等。



FRC access floor is made of silicate, inorganic fiber, mineral fiber, quartz sand, etc, once molded after high pressure. The panel has no volatile toxic chemicals and radiation, and can be decomposed completely. Its service time is the same as the building. Each panel has hole for wires, four corners supported by pedestals, with no stringers. Good flatness and solid feeling. Finishes can be laminate flooring, PVC, carpet, etc.

特征/Feature

- 全包封闭结构、密封性强；
- 承载力、抗冲击性能高；
- 表面平整度、外形尺寸精确度高，地板可任意互换；
- 阻燃、隔热、隔声、防腐等性能好；
- 外表整齐美观、装饰性强、行走脚感舒适。

- Constituted by all steel sheet, good loading capacity.
- High dimension accuracy and excellent interchangeability.
- Water-proof, fire-proof, antiseptis and sound insulation.
- Elaborated made and good decorative effect.
- Full steel encasement and good sealing.



Type	Size	Concentrated	Impact Load	Ultimate Load	Uniform Load	Rolling Load
型号	尺寸	集中载荷	冲击载荷	极限载荷	均布载荷	滚动载荷N
International	mm	N	N	N	N/M ²	10次 10000次
Heavy duty重型	500×500×25	3000	670	≥9000	≥12500	2215 1548
Extra Heavy duty加强型	500×500×25	5000	670	≥15000	≥28598	4121 3210

铝合金高架地板

ALUMINUM ACCESS FLOOR



SIZE

600×600×55mm



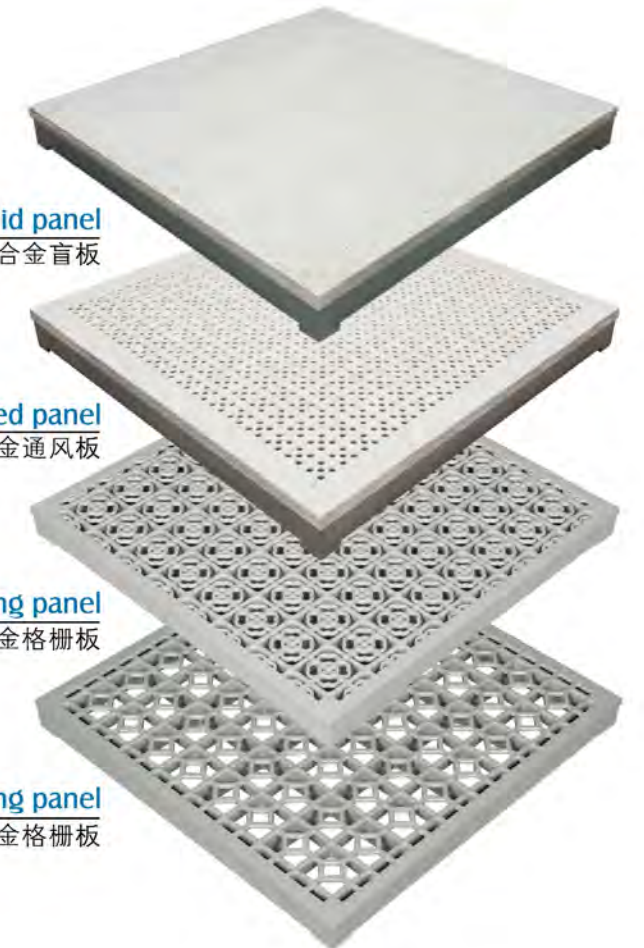
Aluminum solid panel
铝合金盲板



Aluminum perforated panel
铝合金通风板

Aluminum grating panel
铝合金格栅板

New type aluminum grating panel
新型铝合金格栅板



特征/Feature

压铸铝合金地板质地轻巧，耐腐蚀。广泛的应用于航天中心，军事指挥中心，数据中心和洁净室。

Aluminum access floor is die-casting with aluminum ingot which is light and anticorrosion. Aluminum access floor is widely used in the Aerospace Center, Military Command Headquarter, Data Center and Clean Room.

Type	Size	Concentrated	Impact Load	Ultimate Load	Uniform Load	Rolling Load	
型号	尺寸	集中载荷	冲击载荷	极限载荷	均布载荷 N	滚动载荷 N	
International	mm	N	N	N	N/M ²	10次 10000次	
A1000	ACD-12	600×600	≥4498	670	≥13494	≥23294	3596 2959
A1500	ACD-12	600×600	≥6693	670	≥20090	≥42581	5595 4498

室外支架

ADJUSTABLE PLASTIC PEDESTALS



Wide Range of Applications

- terraces
- balconies
- pool decks
- water features landscape area's
- roofs
- interior flooring
- shop design

用途广泛

- 台阶/斜坡
- 阳台
- 泳池甲板
- 水景/园景区
- 屋顶
- 室内地面
- 店内装潢



Support real figure

支架实物图



承重能力 Performance load:1T

支架系统

UNDER STRUCTURE



Stringers 横梁

横梁可提升滚动载荷和抗震载荷。

Stringers provide lateral resistance to heavy rolling loads & seismic loading.



Heavy pedestal 重型支架



Cross head pedestal 铝头/铁头支架



Flat head pedestal 平头支架



Round head pedestal 圆头支架

地板支架高度可以定做，完成高度80mm到2,000mm.

Finished flooring height (FFH) from 80mm to 2,000mm is available, with high loading strength.



Seismic pedestal 防震支架系统



Ramp pedestal 斜坡支架 Pedestal bracing 斜支撑



规格:Φ38

规格:Φ32

Bracing clamp 抱箍

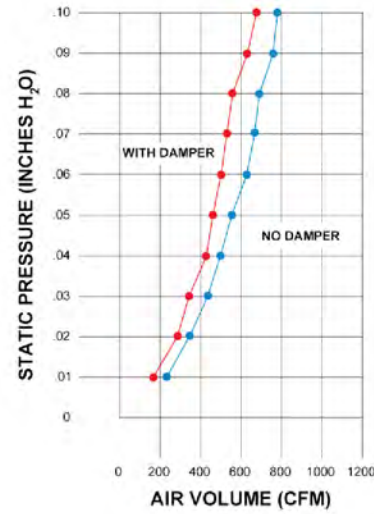
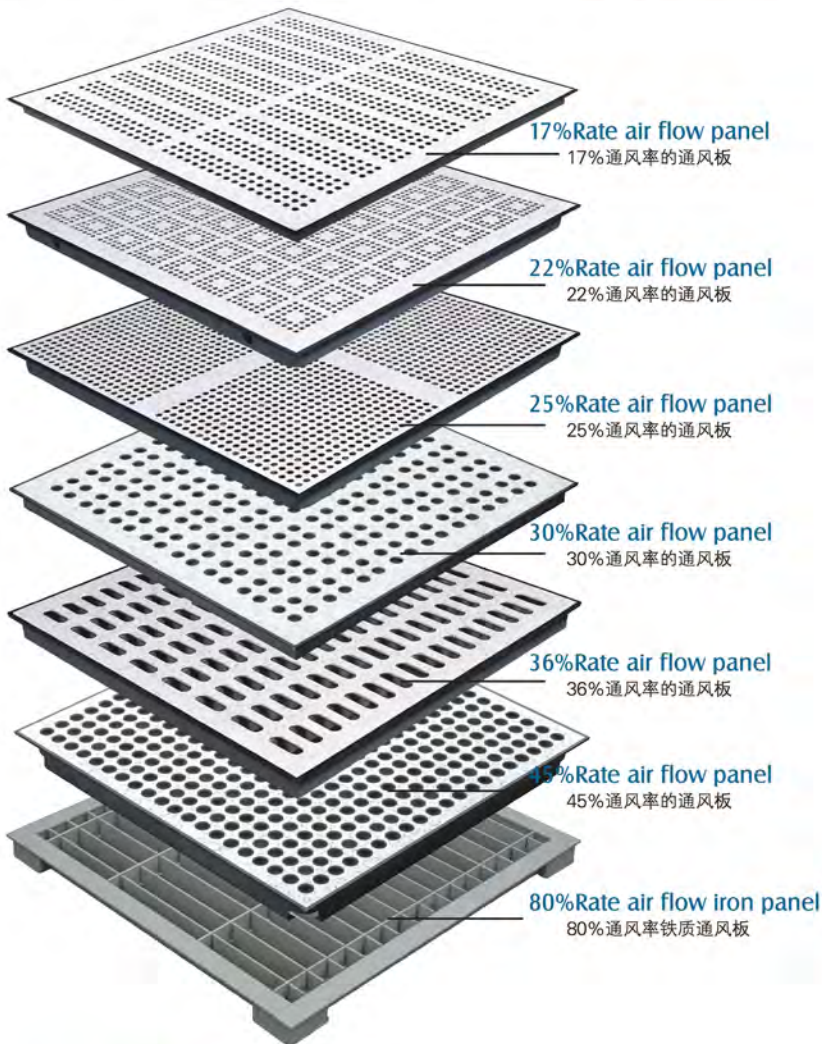
通风板系列

AIR FLOW SYSTEM



SIZE

600×600×35mm
610×610×35mm



特征/Feature

特点：提供通风功能，可与风量调节器一起使用。以上通风板可以和贴面地板、木地板、硫酸钙地板配套使用。

Provide superior cooling for managing heat loads in mission critical facilities. Available with top surface adjustable dampers. The steel perforated panels are same size and finish as the solid panel, so they are available with High Pressure Laminates, Vinyl and rubber floor coverings interchangeable with woodcore panel/calcium sulphate panel.



56% Opening Rate Die-casting aluminum grate panel (interchangeable with steel panel)

56%通风率压铸铝格栅板（可与钢地板一起使用）



Aluminum Grille
铝风口



Air Diffuser
散流器



Sliding Damper

平移式调节器



Round Damper

旋转式调节器



Opposite Open Damper
(for aluminum grate panel and air grille)

对开式调节器

公司另生产高架地板下通风系统，请向公司业务经理索取相关资料。Also promote access floor under floor air plenum system. For more details, please contact company sales.

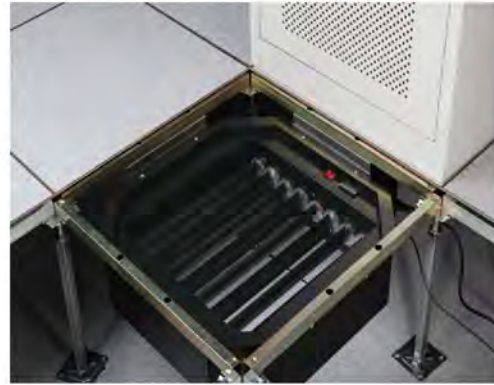
通风系统

AIR FLOW SYSTEM

温控变风量风阀/Temperature Control VAV damper

美杰特公司的温控变风量风阀广泛用于数据中心，使用过程中，温控风阀安装于相邻的两排机柜中间，通过电子传感器来侦测机柜柜体内部温度变化，并把检测数据传送到电脑，电脑会对比此结果与程序提前设定的温度差异，由电脑自动调节风阀开闭角度的大小来调整风量的强度。由此控制机柜内部温度恒定，进而达到节约能源消耗的目的。

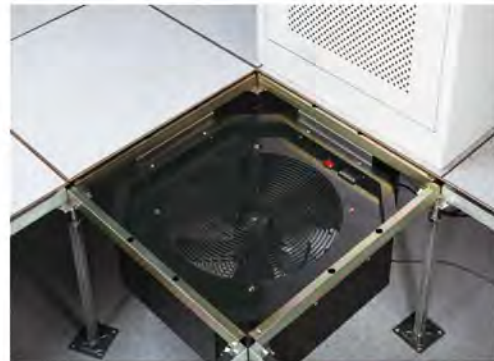
MTFLOOR underfloor temperature control VAV damper is used to provide sufficient air to accommodate the peak energy demands of the rack, resulting in wasted bypass air and over-cooling during all less than peak conditions. The damper measures the incoming air temperatures at the face of the rack and adjusts the VAV damper to control the air flow and ensure that the temperature at the face of the rack is never above the maximum allowable set point provided by the user.



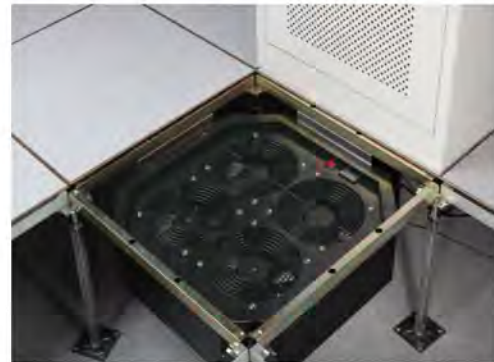
温控变风量风扇/Temperature Control Fan System

风扇设计原理如下，通过调整一个或四个相对独立的风扇转速，从而为机房提供有效冷却方式。工作过程中，当系统的温度传感器检测到当前温度超过系统要求的范围时，系统自动打开并调节温控风扇旋转速度。从而保证温度保持恒定。这也是中天公司为解决数据中心温度要求而提供的一种高效的解决方案。

MTFLOOR Air boosted Power Fan Unit is designed to provide a blast of cooling through an individual directional airflow panel. The temperature controlled fan units are available quad fan models. The fan has multiple control options to automatically turn on when conditions require additional cooling. This powerful solution is ideal for solving the toughest hot spots in a data center.



Fan Unit 单风扇



Four-Fan Unit 4 风扇

性能特点/Performance Characteristics

- 容易安装，0 维护
- 多种控制方式可以选择
- 电子传感侦测系统
- 温度控制精确高效
- 自由设定温度控制点
- 单个排机柜温度可自由设定
- 风量可由0 到100% 自由控制
- 配套600×600或24"×24" 地板系统使用
- Zero maintenance
- Installation can be carried out by IT staff
- Multiple control options for both models available
- VN - client sensor network • High Precision, Quick Response Temperature Measurement
- User programmable set point
- Viewable Peak Temp for walkthrough check of each rack
- Infinitely variable fan speed from 0-100% for precise airflow control
- Easily installs into either 24" or 60cm raised floor systems

产品概述/Product Overview

美杰特导向型通风板定向气流角度直接送风给服务器机柜，不同于其他送风格栅，直接送风角度对准服务器机柜，极大地减少了旁通风量。和标准42U机柜一一配对使用。提供定向送风，设计坚固，提高能效。

Directional Perforated Access Floor Panels to angle the air toward the equipment achieving a 93% Total Air Capture (TAC) rate by a standard server rack. This means 93% of the airflow delivered through the airflow panel is entering the face of the server rack, providing more capacity and energy efficiency of any other perforated airflow panel on the market.

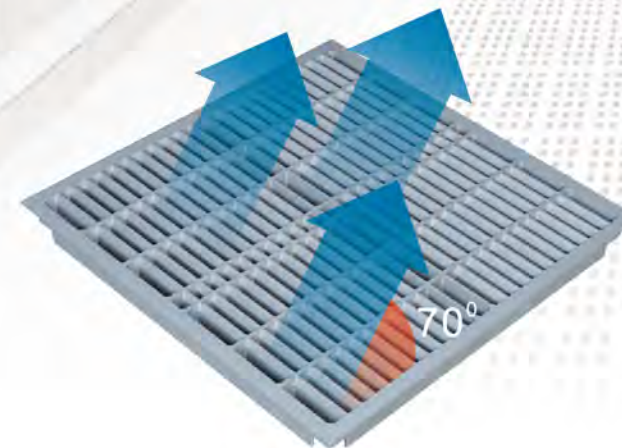
- Without a damper.
- Directional air flow achieves a 93% total air capture.
- Cools over 8kW per rack.
- Over 40% annual fan energy savings.
- Reduces capital expenditures on cooling infrastructure by 40%.
- Available in 3 concentrated load ratings 800, 1000 and 1250 lbs.
- Easily integrates into an existing 24" raised floor system 20% open area delivers 640m³/h at 25 Pa when installed

20% Rate Directional Perforated Access Floor Panels 20% 通风率导向型通风板



Structure 解剖图

68% Directional Grate Panel 68% 导向型格栅通风板

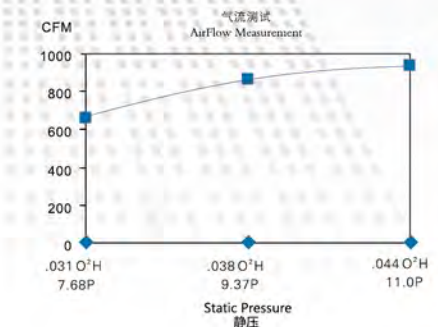


Meets CISCA and BS EN 12825 standards.
符合CISCA和BS EN 12825标准

Comes with a split louvered damper to you can adjust the volume of air
带调节器可调节风量

Extremely durable, grey hammer-tone powder coat finish to prevent corrosion.
极其耐用，表面喷塑处理，耐腐蚀

The only directional airflow panel in the world made of cast aluminum.
定向压铸铝通风板



高架地板配件

FLOORING ACCESSORIES



“MT FLOOR” presents an extensive choices of accessories, including electrical boxes, grommets, panel lifters and air diffuser and so on. 可提供配件，如走线盒、电插座、支架胶水等。



Round brush grommet 圆形刷子走线盒



Surface brush grommet 方形刷子走线盒



Split integral grommet 半开型走线盒



Diameter 15cm

Diameter 19.5cm

Round Grommet 圆形走线盒



Square Grommet 方形走线盒



Integral grommet 长方形走线盒



Single/Double cup lifter 单(双)吸盘



Outlet box B 地插座B

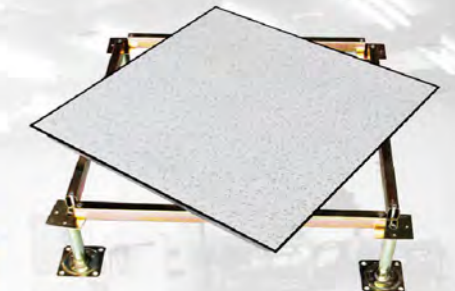


Outlet box C 地插座C

贴面材料

Covering Material

High Pressure Laminate(HPL) 防火板



MT-2048



MT-8345



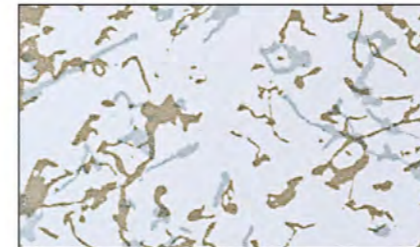
MT-8311



MT-8312



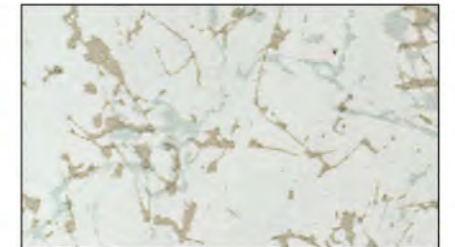
MT-2042



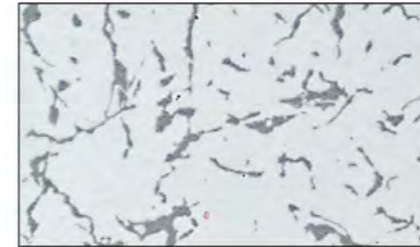
MT-8192



MT-8193



MT-8194



MT-8191



MT-8132



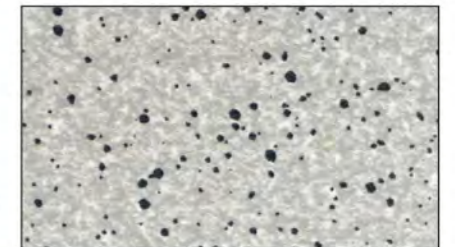
MT-8120



MT-8194-1



MT-8144



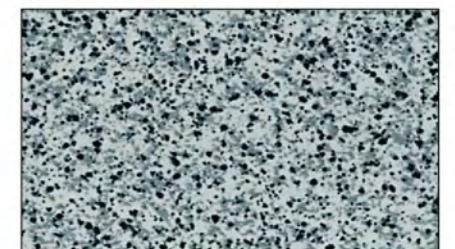
MT-8138



MT-8137



MT-8119

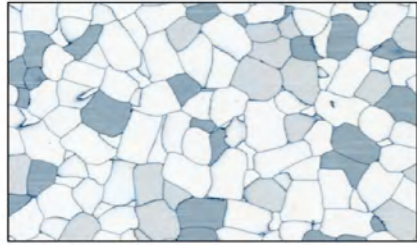


MT-8117

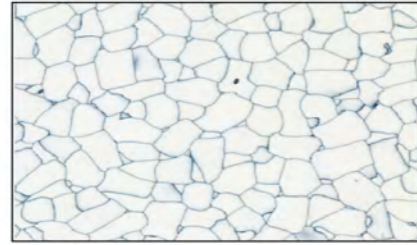
贴面材料

Covering Material

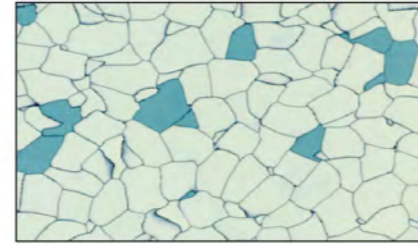
Conductive PVC tile 导电PVC地砖(10⁴-10⁶ohms)



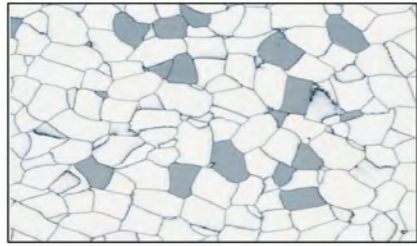
MT-1101



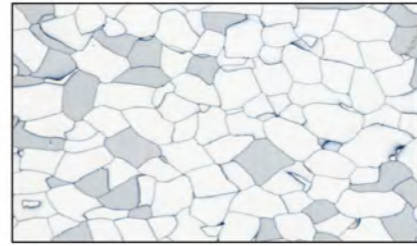
MT-1103



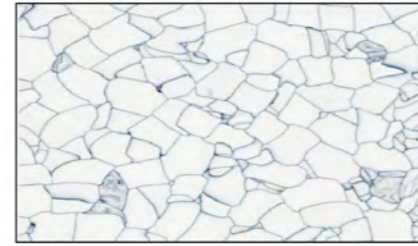
MT-02



MT-04

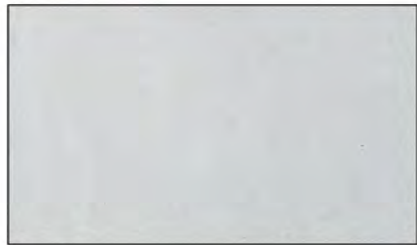


MT-909



MT-9022

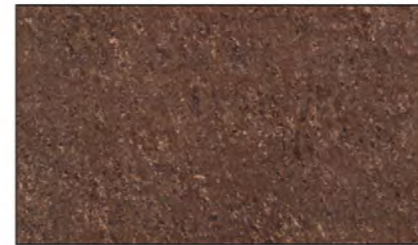
Ceramic tile 陶瓷



MT-05



MT-06



MT-07

Homogeneous vinyl 弹性透心材料



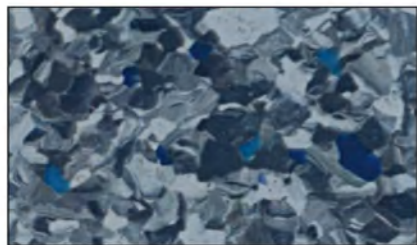
MT-2058



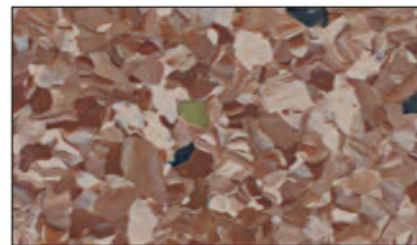
MT-2062



MT-2070



MT-2051



MT-2060



MT-2066

贴面材料

Covering Material

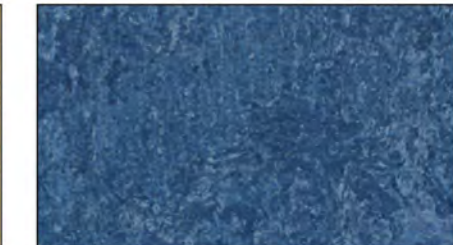
Linoleum 环保亚麻



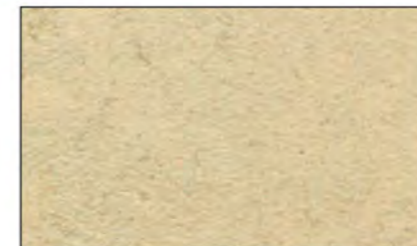
MT-3881



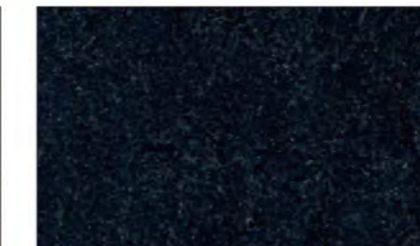
MT-3846



MT-3856



MT-3858

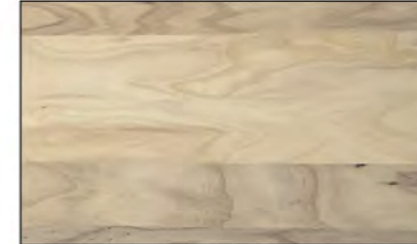


MT-3872



MT-3825

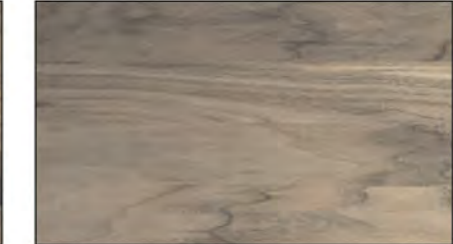
Timber 木纹贴面



MT-4801



MT-4802



MT-4803



MT-4804



MT-4805



MT-4806

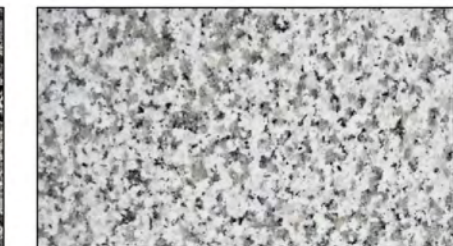
Granite 大理石



MT-G653



MT-G654



MT-G655

工程案例

Project Reference



盐城金融城
Yancheng Financial City
地点(Place) : 盐城 Yancheng
面积(Area) : 145700m²
地板类型(Panel Type) : OA网络地板



苏州尼盛广场
Suzhou Nisheng Building
地点(Place) : 苏州 Suzhou
面积(Area) : 38000m²
地板类型(Panel Type) : OA网络地板



深圳威盛大厦
Shenzhen Weisheng Building
地点(Place) : 深圳 Shenzhen
面积(Area) : 30000m²
地板类型(Panel Type) : OA网络地板



上海博世研发中心大楼
Bosch Shanghai Research Center
地点(Place) : 上海 Shanghai
面积(Area) : 27000m²
地板类型(Panel Type) : OA网络地板



上海长丰大厦
Shanghai Changfeng Building
地点(Place) : 上海 Shanghai
面积(Area) : 22000m²
地板类型(Panel Type) : OA网络地板



上海新桥商务广场
Shanghai Xinqiao Business Center
地点(Place) : 上海 Shanghai
面积(Area) : 22000m²
地板类型(Panel Type) : OA网络地板



南京七星楼
Nanjing Qixingjun
地点(Place) : 南京 Nanjing
面积(Area) : 15000m²
地板类型(Panel Type) : OA网络地板



南昌银行金融服务中心
Nanchang Bank Financial Services Centre
地点(Place) : 南昌 Nanchang
面积(Area) : 20000m²
地板类型(Panel Type) : 硫酸钙网络地板



南昌欧菲光科技
Nanchang Oufeiguang Technology
地点(Place) : 南昌 Nanchang
面积(Area) : 9500m²
地板类型(Panel Type) : 铝合金地板



北京电信通信指挥楼
China Telecom (Beijing) Office Building
地点(Place) : 北京 Beijing
面积(Area) : 15000m²
地板类型(Panel Type) : HPL防静电地板



南昌绿地新都会
Nanchang Greenland Center
地点(Place) : 南昌 Nanchang
面积(Area) : 20000m²
地板类型(Panel Type) : 新型线槽网络地板



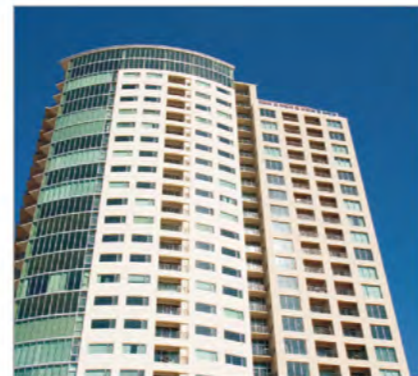
上海巴克莱银行
Barclays Bank Shanghai
地点(Place) : 上海 Shanghai
面积(Area) : 25000m²
地板类型(Panel Type) : OA网络地板



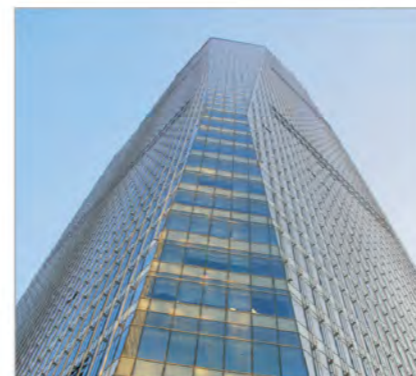
苏州国信大厦
Suzhou Guoxing Building
地点(Place) : 苏州 Suzhou
面积(Area) : 15000m²
地板类型(Panel Type) : OA网络地板



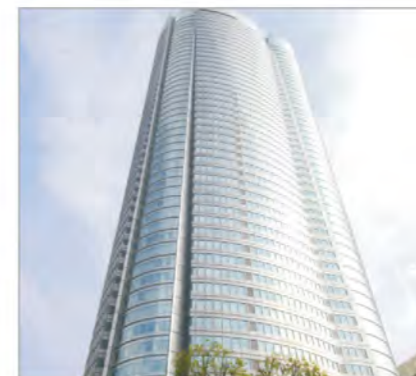
成都棕榈泉国际中心
Chengdu Palm Springs International Center
地点(Place) : 成都 Chengdu
面积(Area) : 50000m²
地板类型(Panel Type) : OA网络地板



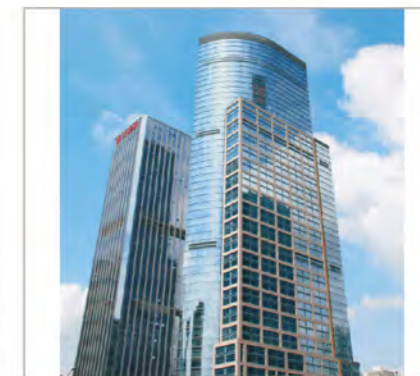
上海展想电子
Shanghai Zhangxiang Electronic Co., Ltd
地点(Place) : 上海 Shanghai
面积(Area) : 40000m²
地板类型(Panel Type) : OA网络地板



上海惠普工厂
HP Shanghai Factory
地点(Place) : 上海 Shanghai
面积(Area) : 12000m²
地板类型(Panel Type) : OA网络地板



上海杜邦办公大楼
DuPont Shanghai Office Building
地点(Place) : 上海 Shanghai
面积(Area) : 15000m²
地板类型(Panel Type) : OA网络地板



上海阿斯利康办公大楼
AstraZeneca (Shanghai) Office Building
地点(Place) : 上海 Shanghai
面积(Area) : 10000m²
地板类型(Panel Type) : OA网络地板